

SEHLUKO 11

SISWATI LULWIMI LWASEKHAYA

Lombiko lolandzelako kumele ufundwe ngekuhlanganyela nemaphepha eluhlolo lweSiswati Lulwimi Lwasekhaya lwaLweti 2018.

11.1 INDLELA BAHLOLWA LABASEBENTE NGAYO: Emaphepha 1–3 (2018)

Indlela bahlolwa labasebente ngayo jikelele, ikhombisa imiphumela leenyukile nayicatsaniswa nemiphumela yemnyaka we-2017.

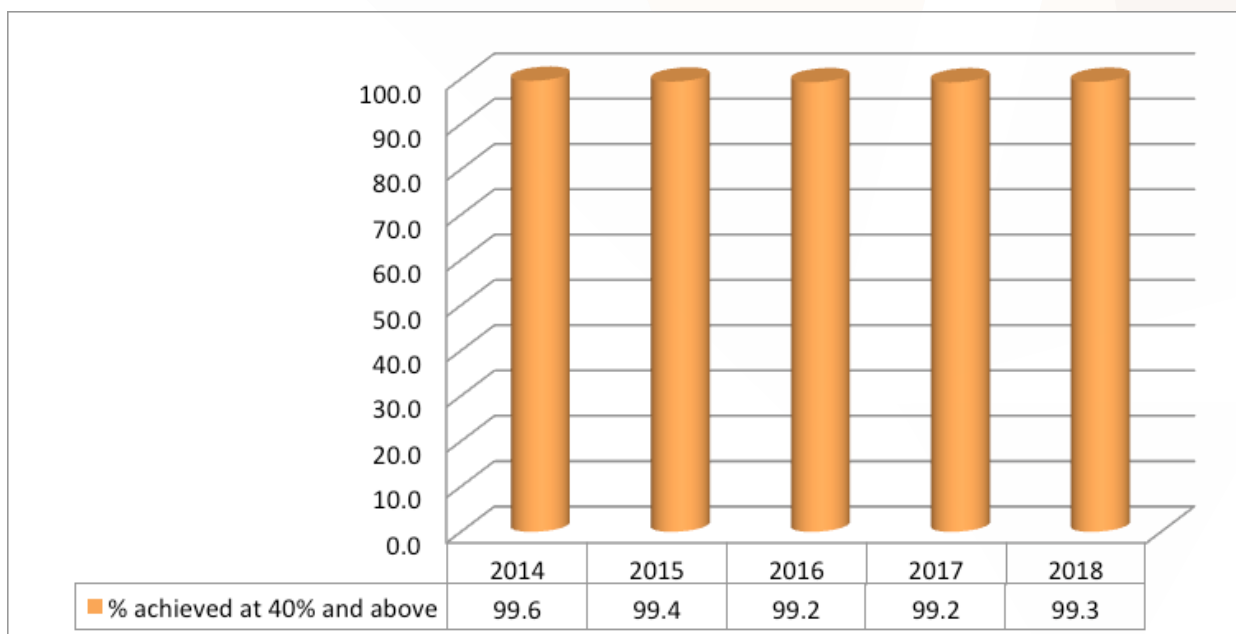
Kugceme letimphawu letilandzelako ngemnyaka we-2018:

- Linani lebahlolwa lababhale Siswati Lulwimi Lwasekhaya, lehle nge-550.
- Imphumelelo jikelele yebahlolwa yemnyaka we-2018, ikhombisa kuba sezingeni lelisetulu njengobe yenyukile kuneyemnyaka we-2017.

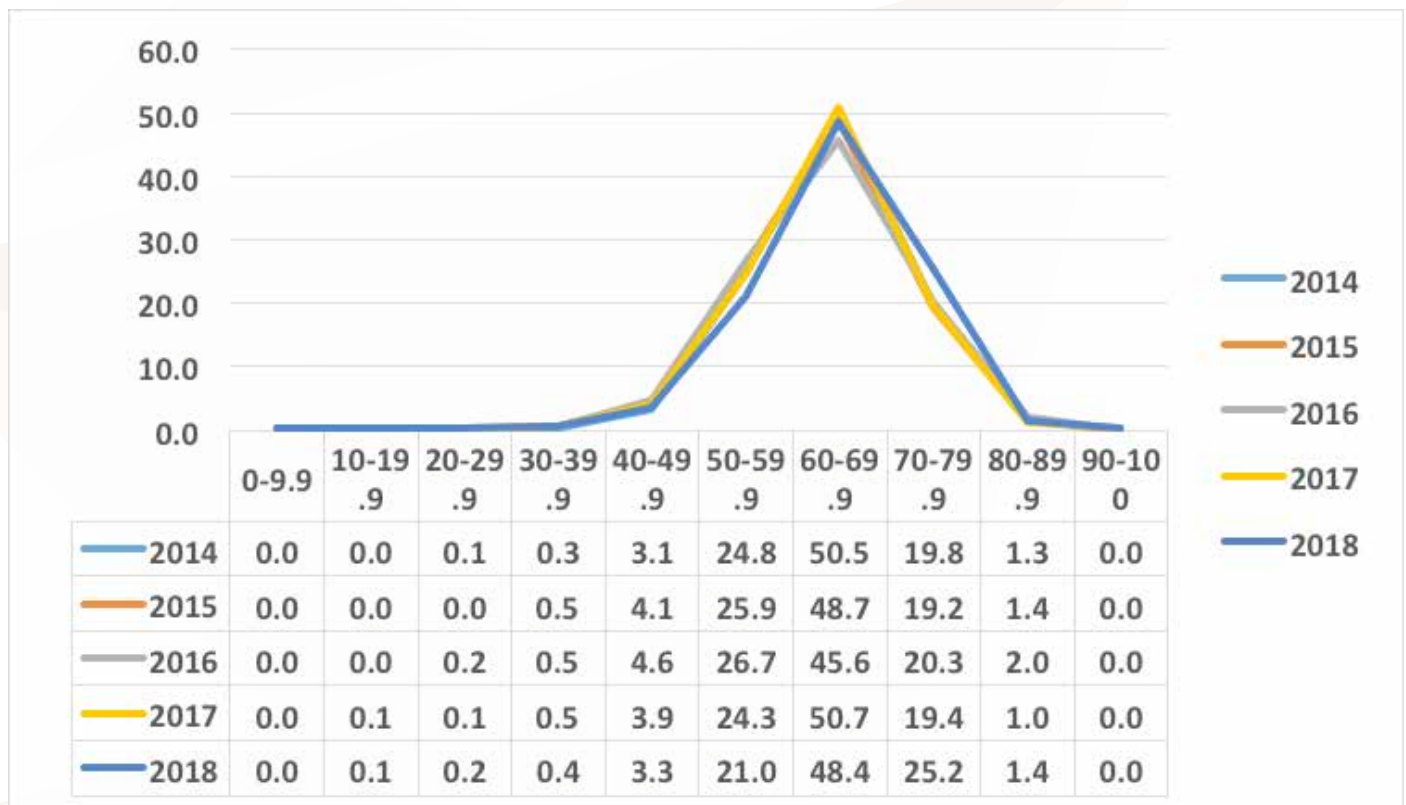
Lithebuli 11.1.1: Emazinga emphumelelo yebahlolwa jikelele, eSiswati Lulwimi Lwasekhaya

Umnyaka	Linani lalababhalile	Linani leliphumelele nge-40% nangetulu	Emaphesenti lazuzwe ngulabaphumelele nge-40% nangetulu
2014	15 545	15 478	99,6
2015	18 589	18 474	99,4
2016	19 649	19 501	99,2
2017	18 123	17 981	99,2
2018	17 573	17 454	99,3

Igrafu 11.1.1: Emazinga emphumelelo yebahlolwa jikelele, seyiyonkhe, eSiswati LuLwimi LwaseKhaya



Igrafu 11.1.2: Kwabiwa kwemamaki ebahlolwa ngekwendlela yegrafu (Siswati LuLimi LwaseKhaya: 2014–2018)



Nakubukwa legrafu lengenhla, kuyabonakala kutsi emazinga emphumelelo-3, 4, 5, 6 ne-7 enyuke ngemaphesenti la-0.6, 3.3, 2.3, 5.8 ne-0.4 nacatsaniswa neweminyaka leyendlulile. Lonyaka kube nekwehla lokutsite kwelizinga lemphumelelo -2, nge 0.1 phesenti, kantsi kwelizinga lemphumelelo 1 lenyuke nge 0.1 nacatsaniswa nemnyaka we-2017. Lokwenyuka kwalamazinga emphumelelo, kukhombisa intfutuko yelizinga lelifanele.

11.2 SIBUTSETELO SEMPHUMELELO YEB AHLOLWA EPHEPHENI LE-1 Kuphawula jikelele.

Umbuto 1: Sivisiso

Linyenti lebahlolwa likhombise lwati lwelikhono lekufundza nekuvisisa itheksthi babuye bakwati kuphendvula imibuto lephatselene netheksthi ngalokwemukelekako, lokwente kutsi litfole emamaki lamanyenti, ngaphandle kwalabo labangakasifundzisi lesivisiso nalabo lababhale imibuto njengobe injalo ephepheni lemibuto.

Umbuto 2: Sifinyeto

Bambalwa bahlolwa labangakawuphendvuli kahle lombuto. Labo labangakawuphendvuli lombuto bakhombise kungabi nelwati lwemakhono ekubona nekufinyeta emaphuzu lamcoka etheksthini, kakhulukati kufinyeta ngewabo emagama. Labanyenti bawuphendvule kahle lombuto lokwente kutsi baphumelele ngemalengiso kuwo.

Umbuto 3: Sikhangisi

Labanyenti bahlolwa bakhombise kungabi nelwati lwelulwimi lwekukhangisa nekucikelelwa kwekusetjentiswa kwelulwimi ngalokujulile. Linyenti labo alikawuphendvuli kahle lombuto, lokwente kutsi lizinga lemphumelelo kulombuto libe phasi.

Umbuto 4: Ikhathuni

Banyenti bahlolwa labakhombise kuwuvisisa lombuto ngekutsi bawuphendvule ngelizinga lelisetulu kakhulu.

Umbuto 5: Luhelo nekusetjentiswa kwalo esimeningcondvo lesitsite.

Impumelelo kulombuto ikhombise kuba sezingeni leliphasi, lokusho kutsi bahlolwa babe nebumatima bekuwuphendvula ngalokulindzelekile. Loku kuveta sobala kutsi bahlolwa banelwati loluncane lwetakhi netimiso tekusetjentiswa kwelulwimi ngekwesimongcondvo lesemukelekako. Linyenti labo alikaphumeleli kulombuto, kantsi futsi labanye abakatihluphi sanhlobo kuwuphendvula.

11.3 KUHLATIYWA KWENDLELA BAHLOLWA LABASEBENTE NGAYO EPHEPHENI LE-1

UMBUTO 1: Sivisiso

Emaphutsa lavamile nekungavisisi umbuto.

- Umbuto 1.1.4, bekulindzeleke kutsi bahlolwa bati umehluko lokhona emkhatsini weligama lelitsi, 'indlala', lelisho liphango nendlala lesho kwesweleka kwentfo letsite, bese banika sizatfu sekutsi yini kutsiwe lomshado bewuyindlala/ imvelakancane.
- Bahlolwa abatati tintfo letingena ngaphasi kweluhlelo (i-ajenda). Esikhundleni sekutsi bengete luhlelo banika tintfo letingemalungiselelo alomcimbi. Loku kuveta sobala sizatfu lesente kutsi bahlolwa behluleke kuphendvula umbuto 1.1.8.
- Embutweni 1.1.11, bekulindzeleke kutsi bahlolwa banike buhlobo **bengati** emkhatsini waBusisiwe kanye nababekati wakhe, bona banika budlelwano emkhatsini wabo lokusho kuhambelana/ kuvana kwabo.
- Imbangela yekungaphedvuleki kahle kwembuto 1.2.5 kutsi bahlolwa behlulekile kubona budlelwano emkhatsini wesibonwa nemusho locindzetelwe etheksthini yekucala, lokwente kutsi balahlekelwe ngemamaki kulombuto.

Tiphakamiso tekutfufukisa imiphumela yebahlolwa.

- Bafundzi kumele bafundzise tindlela tekuphendvula imibuto yesivisiso, letifaka ekhatsi tinkhombamagama, imisho leyinkhomba yetesimongcondvo, njll.
- Bafundzisi kumele bafundzise indlelanchoo nemasu ekufundza itheksthi, njengobe kuphawuliwe ekhasini le-24 leSitatimende Sekharikhulamu Yenchubomgomo Nekuhlola, (SISEYENE), kutfola umcondvo locuketfwe yitheksthi, kutfola inshokutsi yemagama langaketayekeki. Loko bangakuphumelelisa ngekunika bafundzi imisebenti leminyenti yekufundza ngekuphimisa nekufundza bubindze, njll.
- Kubalulekile kutsi bafundzi bafundzise ngemasiko laphatselene nesive seMaswati njengobe kusho Sitatimende Sekharikhulamu Yenchubomgomo Nekuhlola, (SISEYENE), likhasi le-9 indzima yekugcina, sib. Lisiko lemhlanga, lelusekwane, inchwala, ummemo, kulobola, umtsimba, njll.
- Bafundzisi kumele bakhutsate bafundzi kuhambela imisimeto netibhimbi teSiswati, nekwenta imidlalo, imigidvo nekudla lokuphatselene neMaswati, sib. Sibhaca, indlamu, lutsango, kuphekwa kwekudla kwesintfu, kuchudzelana ngemagama laphatselene nendzabuko yeMaswati, njll.
- Umhlanganosikolo webafundzisi kumele ugugcugcutelwe njalo, lapho batawukhunjutwa khona ngaloko lekumele bakwente ekucedzeni tinkinga tebafundzi, ekufundzeni ematheksthi lacashunelwe tivisiso.
- Belulekitifundvo kufanele balandzelele umsebenti webafundzisi kucinisekisa kutsi bafundzisa ngendlela lelindzelekile, futsi bafundzisa wonkhe umsebenti lophatselene nekufundza.

UMBUTO 2: Sifinyeto

- a. Linyenti lebafundzi likhombise kuba nelwati lwemakhono ekufinyeta, kakhulukati kufinyeta ngewabo emagama.
- b. Bahlolwa bakhombise imphumelelo yelwati lolusezingeni lelisetulu, lwekubona emaphuzu lamcoka, nalekumele bawafinyete.
- c. Bambalwa bahlolwa labangakawuphendvuli kahle lombuto. Bakhombise kungabi nelwati lwemakhono ekufinyeta, kakhulukati kungakhoni kubona emaphuzu lamcoka nekufinyeta ngewabo emagama.
- d. Lwati lwelulwimi lube neligalelo lelibi kulombuto, ekuphumeleleni ngemalengiso.

Emaphutsa lavamile nekungavisisi umbuto.

- a. Labanye bahlolwa abakalandzeli ticondziso tekufinyeta.
- b. Bambalwa bahlolwa lababhale bengca linani lemagama lamisiwe la-80.
- c. Linani lalababhale ngendlela yemaphuzu esikhundleni sekubhala ngendlela yetindzima lehlile.
- d. Labanye bayakhona kufinyeta kodvwa tifynyeto tabo tingabi nemaphuzu lamcoka njengobe kushiwo eticondzisweni.
- e. Bambalwa bahlolwa labatsatsela imisho njengobe injalo etheksthini lefinyetwako bakhe tindzima nelinani lemagama lamisiwe.
- f. Labanye bahlolwa bavele batsatse itheksthi yesifinyeto njengobe injalo, batsi bangafika enanini lemagama lamisiwe bagcine, babe sebabita lowo mbhalo ngesifinyeto.
- g. Bahlolwa labanyenti abawanaki emaphutsa elulwimi labawenta nabafinyeta,
- h. Njengesipelingi, kwehlukani kwehlukani kwemagama, Siswati mbamba, tivumelwano, timphawu tekufundza nekubhala, njll.

Tiphakamiso tekutfufukisa imiphumela yebahlolwa.

- a. Bafundzisi kumele bafundzise bafundzi emasu nemakhono ekufinyeta.
- b. Kumele bafundzi bafundzise kubona nekuhlunga emaphuzu lamcoka etheksthini, bawabhale ngemisho lephelele, levakalako futsi leyakha tindzima.
- c. Bafundzisi kumele bafundzise kufola umcondvo lomcoka, kwakha emanotsi nobe kufinyeta imibono lemcola nalesekelako.
- d. Kumele bafundzisi bentelwe umhlanganosikolo, lapho batawufundziswa khona ngemasu ekufundzisa bafundzi tindlela letifanele tekufinyeta kute kunciphe emaphutsa lentiwa bafundzi nabafinyeta.
- e. Belulekitifundvo kufanele balandzelele umsebenti webafundzisi, kucinisekisa kutsi sifinyeto sifundziswa ngalokufanele.

UMBUTO 3: Kuhlatiya sikhangisi

Emaphutsa lavamile nekungavisisi umbuto.

Kungavisisi lulwimi lwekukhangisa lapho lusetjentiswe khona ngalokujulile kwehlisa imiphumela yalombuto.

- Emasu ekukhangisa, sib. Injongo yekusebentisa lulwimi lolujulile, kuhhunga, imfundzisolite, kusebentisa emafonti lehlukene, njll, kufanele atiwe bafundzi nabahlaliya sikhangisi.
- Kuvame kutsi bafundzi babe nebulukhuni bekubona loko lokukhangiswako.
- Bahlolwa baba nenkinga yekubona luhlobo lwetetsamelilwati, sikhangisi lesicondziswe kuto.

Tiphakamiso tekutfufukisa imiphumela yebahlolwa.

- Bafundzisi abafundzise kusetjentiswa kwelulwimi ngalokujulile njengelulwimi lolutsintsa imiva, lwekuhunga, lolutsatsa luhlangotsi, lolutsatfwa njengemaciniso lube lutsintsa imiva yalabanye, njll. Bona Likhasi le-107 eSitatimendeni Sekharikhulamu Yenchubomgomo Nekuhlola, (SISEYENE).
- Bahlolwa kumele bafundzise kuhunyushwa kwematheksthi etikhangisi. Bona Likhasi le-25, eSitatimendeni Sekharikhulamu Yenchubomgomo Nekuhlola, (SISEYENE).
- Kubalulekile kutsi bafundzi bakhone kubona tinhlobo tetetsamelilwati, sikhangisi lesicondziswe kuto.
- Bafundzisi kumele banike bafundzi imisebenti leminyenti lephatselene tetikhangisi kutsi bayente kute betayele kuyiphendvula.
- Kufanele kutsi bafundzisi bentelwe umhlanganosikolo, lapho batawufundziswa khona ngekuphendvula imibuto lephatselene netikhangisi.
- Belulekitifundvo kufanele balandzelele umsebenti webafundzisi kucinisekisa kutsi kuhlatiywa kwesikhangisi kufundziswa ngendlela lelindzelekile.

UMBUTO 4: Kuhlatiya ikhathuni

Emaphutsa lavamile nekungavisisi umbuto.

- Bahlolwa abahumushi lokwenteka ekhathunini, bagcila kakhulu kulokukhulunywako.
- Abanaso silulumagama lesenele sekuhumusha ikhathuni, sib. ncibijane, emakhilikithi, libala lelicolisiwe/ lelifakwe tjani/ lelifakwe titini, njll.
- Abanalwati lwekusetjentiswa kwelulwimi lwebugagu, sib. taga, tisho, tinongo, emagama endzabuko, emagama ethekhinikhi, njll.
- Labanye bahlolwa abanalwati lwekucikelela kusetjentiswa kwelulwimi ngalokujulile.

Tiphakamiso tekutfufukisa imiphumela yebahlolwa.

- Akutfufukiswe silulumagama nekusetjentiswa kwelulwimi ngalokujulile, njengetinongo tenkhulumo, emagama endzabuko nalaSiswati mbamba, tiga tenkhulumo, lulwimi lolutsintsa imiva, lwekuhunga, lolutsatsa luhlangotsi, lolutsatfwa njengemaciniso lube lutsintsa imiva yalabanye, njll. Bona Likhasi le-104 Esitatimendeni Sekharikhulamu Yenchubomgomo Nekuhlola (SISEYENE).
- Bafundzi kumele bafundzise kuhumusha lulwimi lwentimba/iminyakato leyentiwa bantfu labasekhathunini, sib. Simo sebuso, semtimba, njll.

- c. Bafundzisi kumele bafundzise kuhunyushwa kwematheksthi etibonwa. Bona Likhasi le-25, Sitatimendeni Sekharikhulamu Yenchubomgomo Nekuhlola (SISEYENE).
- d. Bafundzi kumele banikwe tinhlobo letibanti letehlukene temakhathuni kutsi batiphendvule.
- e. Kufanele kutsi bafundzisi bentelwe umhlanganosikolo, lapho batawufundziswa khona tindlela tekuphendvula imibuto ngemakhathuni.
- f. Belulekitifundvo kufanele balandzelele umsebenti webafundzisi kucinisekisa kutsi emakhathuni afundziswa ngendlela lefanelekile

UMBUTO 5: Iphrozi

Emaphutsa lavamile nekungavisisi umbuto.

- a. Umbuto 5.1: Bahlolwa banenkinga yekwehlukana emkhatsini wesibiti, sabito nelibito.
- b. Linyenti lebahlolwa linetinkinga taloku lokulandzelako:
 - * Umbuto 5.2: Kwakhiwa nekuhlalelwa kwemisho.
 - * Imibuto 5.4, 5.7: Titfo tenkhulumo.
 - * Umbuto 5.5, 5.6: Takhi nekusetjentiswa kwato emishweni sib. Kukhomba sikhatsi, kuphika, simo, njll.
 - * Tivumelwano (sesibalulingco nesibalulinsombo, buniyo, njll.)

Tiphakamiso tekutfufukisa imiphumela yebahlolwa.

- a. Bafundzi abafundzise takhi netimiso tekusetjentiswa kwelulwimi ekhasini le-104–107 Esitatimendini Sekharikhulamu Yenchubomgomo Nekuhlola, (SISEYENE), njengetitfo tenkhulumo, takhi, indlela lephikako nalevumako, kusetjentiswa kwetitfo tenkhulumo emshweni, luhlelomusho njll.
- b. Imisebenti leminyenti yetakhi netimiso tekusetjentiswa kwelulwimi kumelwe inikwe bafundzi emisebentini yasemaklasini kanye nasetivivinyweni.
- c. Kufanele kutsi bafundzisi bentelwe umhlanganosikolo, lapho batawusitwa khona ngetindlela tekufundzisa takhi netimiso tekusetjentiswa kwelulwimi. Kute kutfufuke imiphumela yalombuto.
- d. Belulekitifundvo kufanele balandzelele imisebenti yebafundzisi, kucinisekisa kutsi bafundzisa ngendlela lelindzelekile.

11.4 SIBUTSETELO SEMPHUMELELO YEB AHLOLWA EPHEPHENI LE-2

Kuphawula jikelele.

- a. Linyenti lebahlolwa linebumatima baloku lokulandzelako:
 - * Kubhala indzatjanambhalo yetinkondlo
 - * Kuphendvula imibuto yenkondlo lengakafundvwa eklasini
 - * Kuhumusha tinkondlo letimisiwe
 - * Kwehlukana emasu ebunkondlo

- * Kubona inshokutsi yemifanekisomcondvo
 - * Kubhala tindzabambhalo
- b. Bahlolwa babukeka batifundzile letincwadzi tetemibhalo, kodvwa abaphendvuli imibuto lababutwe yona, bacoca indzaba ngalokufisha.
 - c. Kunetincwadzi letine letimisiwe bafundzi labangakatiphendvuli, letifaka ekhatsi tintsatfu kuletindzala nayinye lensha.
 - d. Tindzabambhalo tabo atinasingeniso, umtimba nesiphetho.
 - e. Bahlolwa bakhombise bumatima bekukhetsa imibuto njengobe kushiwo eticondisweni, babhale tindzabambhalo letimbili kantsi labanye babhale imibuto lemifisha lemibili.
 - f. Budze betindzabambhalo tebafundzi abulandzeli linani lemagama lelimiswe eticondzisweni.
 - g. Labanye bafundzi babhala batsatsele imibuto njengobe injalo ephepheni lemibuto.

11.5 KUHLATIYWA KWENDLELA BAFUNDZI LABASEBENTE NGAYO EPHEPHENI LE-2

SIGABA A: TINKONDLO

Indzatjanambhalo yetinkondlo.

Emaphutsa lavamile nekungavisisi umbuto.

- a. Labanye abakawuvisisi kahle umbuto, njengobe bekumele bavete imifanekisomcondvo lesetjentiswe ngusonkondlo kuveta indlela labona ngayo tintfo.
- b. Sakhiwo setindzatjanambhalo tebahlolwa asinasingeniso, umtimba nesiphetho.
- c. Labanye bavele batsatsele inkondlo njengobe injalo ephepheni lemibuto.
- d. Budze betindzabambhalo tebafundzi abulandzeli linani lemagama lelimiswe eticondzisweni.
- e. Tiphakamiso tekutfufukisa imiphumela yebahlolwa.
- f. Bafundzi abafundziswe imifanekisomcondvo nendlela sonkondlo layisebentisa ngayo enkondlweni kuveta indlela labona ngayo tintfo, ekhasini le-27 leSitatimende Sekharikhulamu Yenchubomgomo Nekuhlola, (SISEYENE).
- g. Akugcizelelwe kutsi indzabambhalo kumele ibe nesakhiwo lesinesingeniso, umtimba kanye nesiphetho.
- h. Abanikwe imibuto yekubhala indzatjanambhalo yenkondlo kute betaye.
- i. Kufanele bafundzisi bentelwe umhlanganosikolo, lapho batawufundziswa khona indlela lekumele bayewufundzisa ngayo kubhalwa kwendzatjanambhalo eklasini.
- j. Belulekitifundvo kufanele balandzelele umsebenti webafundzisi kucinisekisa kutsi bafundzisa ngendlela lelindzelekile.

Imibuto lemifisha yetinkondlo.

Emaphutsa lavamile nekungavisisi umbuto.

- a. Bahlolwa babe nebumatima bekuhumusha inkondlo, banike inshokutsi yayo.
- b. Abakwati kubona sakhiwo sangaphandle nesangekhatsi enkondlweni.

- c. Labanye bahlolwa ababuyeli enkondlweni nangabe umbuto udzinga kutsi bayewutfolela imphendvulo enkondlweni, sib. Imibuto 2.4, 3.4, 4.2, 4.4, 5.5, njll.
- d. Banebumatima bekubona, kulumusha nekusebentisa lulwimi lwebugagu nekuhambelana kwalo nenkondlo.

Tiphakamiso tekutfufukisa imiphumela yebahlolwa.

- a. Bafundzisi kumele batifundzise tonkhe tinkondlo le-12 letimisiwe kute bafundzi babe sesimeni sekuphendvula nanobe ngumuphi umbuto lobutwe ngato.
- b. Bafundzi abafundziswe timphawu tekuhluta inkondlo nangendlela letisetjentiswa ngayo nakuhlutwa inkondlo, bona likhasi le-27 leSitatimende Sekharikhulamu Yenchubomgomo Nekuhlola (SISEYENE).
- c. Abafundziswe kulumusha inkondlo, babuye banike inshokutsi yayo.
- d. Bafundzi abafundziswe kubuyela enkondlweni nangabe umbuto udzinga kutsi bayewutfolela imphendvulo kuyo.
- e. Abakhutsatwe kutsi nangabe kulindzeleke babhale umusho lowesekela umcondvo lotsite, babobhala umusho hhayi ligama linye kuphela.
- f. Abafundziswe kubona budlelwano benkondlo nemphilo lephilwa etikhatsini talomuhla.
- g. Bafundzisi abahlute tinkondlo letehlukahlukene nanobe tingakemiswa, kute bafundzi betayele kuhlutwa kwetinkondlo kanye nebunkondlo lobutfolekala kuto enkondlweni lengakafundvwa eklasini.
- h. Bafundzi abanikwe imisebenti lapho batakhela khona imifanekisomcondvo ngetimo letitsite.
- i. Kufanele bafundzisi bentelwe umhlanganosikolo, lapho batawufundziswa khona ngekuhlutwa kwetinkondlo.
- j. Belulekitifundvo kufanele balandzelele umsebenti webafundzisi kucinisekisa kutsi bafundzisa ngendlela lelindzelekile.

SIGABA B na C

Inoveli/Temdzabu, Umdlalo (Umbuto wenzabambhalo).

- a. Akukho namunye umfundzi lophendvule lemibuto lelandzelako:
 - * Umbuto we-6, Liphume Nebovu
 - * Umbuto we-8, Kubamba Letingelako
 - * Umbuto we-12, Silulu SeMaswati
- b. Linyenti lebahlolwa likhetse kuphendvula umbuto we-10, Tibopho Telutsandvo.

Emaphutsa lavamile nekungavisisi umbuto.

- a. Bambalwa bahlolwa labehluleke kuwuphendvula lombuto.
- b. Tindzabambhalo tebahlolwa tikhombise kungahambelani netimiso tesakhiwo sendzabambhalo, atinasingeniso, intimba nesiphetfo.
- c. Labanye bahlolwa bacoce indzaba esikhundleni sekuphendvula umbuto lobutiwe.
- d. Labanye babo batsatsele imibuto njengobe injalo ephepheni lemibuto, lokwente kutsi balahlekelwe ngemamaki la-25.

Tiphakamiso tekutfufukisa imiphumela yebahlolwa.

- a. Bafundzi abafundziswe umehluko lokhona emkhatsini wenzaba yekuticambela nendzabambhalo. Indzabambhalo ibuta ngencwadzi letsite yetemibhalo kantsi indzaba yekuticambela iticocela indzaba lesuselwa enhloko ngesihloko lesitsite.
- b. Bafundzi abafundziswe sakhiwo sendzabambhalo, sib. singeniso: sichaza sihloko naloko lokutawukhulunywa ngako, umtimba: ukhuluma kabanti ngesihloko neminingwane leyesekelako letfolakala encwadzini lebutiwe, siphetho: sisonga konkhe lokucocwe ngako endzabenimbhalo.
- c. Bafundzisi abafundzise bafundzi indlela yokuphendvula imibuto yetemibhalo endzaweni yekucoca indzaba ngencwadzi lebutiwe nobe batsatsele imibuto njengobe injalo.
- d. Bafundzi abanikwe imisebenti leminyenti lephatselene nendzabambhalo bayente emaklasini kute betayele kuyiphendvula.
- e. Kufanele bafundzisi bentelwe umhlanganosikolo, lapho batawufundziswa khona ngendlela lekumele ilandzelwe nakufundziswa kubhalwa kwendzabambhalo yenoveli eklasini nasetivivinyweni.
- f. Belulekitifundvo kufanele balandzelele umsebenti webafundzisi, kucinisekisa kutsi bafundzisa ngendlela lelindzelekile.

Umdlalo (Umbuto wendzabambhalo).

- a. Akukho namunye umfundzi lophendvule imibuto lelandzelako: Umbuto 16, Lami Lisiphetho.
- b. Linyenti lebahlolwa likhetse kuphendvula Umbuto 14, Kutawuba Njalo.

Emaphutsa lavamile nekungavisisi umbuto.

- a. Bambalwa bahlolwa labehlulekile kuwuphendvula lombuto.
- b. Bahlolwa bahlanganisa balingisi nebadlali.
- c. Bavamise kukhohlwa emabito ebadlali nobe batsatse emabito lasenovelini bawasebentise emdlalweni.
- d. Tindzabambhalo tebahlolwa tikhombise kungahambelani netimiso tesakhiwo sendzabambhalo, atinasingeniso, umtimba nesiphetho.
- e. Bahlolwa bacoca indzaba esikhundleni sekuphendvula umbuto.
- f. Labanye babo batsatsele imibuto njengobe injalo ephepheni lemibuto.

Tiphakamiso tekutfufukisa imiphumela yebahlolwa.

- a. Bafundzi abafundziswe umehluko lokhona emkhatsini wenzaba yekuticambela nendzabambhalo. Indzabambhalo ibuta ngencwadzi letsite yetemibhalo kantsi indzaba yekuticambela iticocela indzaba lesuselwa enhloko.
- b. Bafundzi abafundziswe kuveta bufakazi nekwesekela loko labakhuluma ngako sib. nangabe umfundzi kumele aphawule ngemdlali lolungile endzabeni, kumele afune loko langesekela ngako kuphela, angabhali indzaba yonkhe.
- c. Bafundzi abafundziswe sakhiwo sendzabambhalo bati naloko lokungena ngaphasi kwaleso naleso sihlokwana sendzabambhalo, sib. Singeniso: sichaza sihloko naloko lokutawukhulunywa ngako, umtimba: ukhuluma kabanti ngesihloko neminingwane leyesekelako letfolakala encwadzini lebutiwe, siphetho: sisonga konkhe lokucocwe ngako endzabenimbhalo.
- d. Bafundzisi abafundzise bafundzi indlela yokuphendvula imibuto yetemibhalo endzaweni yekucoca indzaba ngencwadzi lebutiwe nobe batsatsele imibuto njengobe injalo.

- e. Bafundzi abafundziswe kutsi badlali batfolakala emdlalweni, balingisi batfolakala enovelini/temdzabu.
- f. Bafundzi abanikwe imisebenti leminyenti lephatselene nendzabambhalo, bayente emaklasini.
- g. Kufanele bafundzisi bentelwe umhlanganosikolo, lapho batawufundziswa khona ngendlela lekumele ilandzelwe nakufundziswa kubhalwa kwendzabambhalo yemdlalo eklasini nasetivivinyweni.
- h. Belulekitifundvo kufanele balandzelele umsebenti webafundzisi kucinisekisa kutsi bafundzisa ngendlela lelindzelekile.

SIGABA B na C

Inoveli/ Temdzabu (Imibuto lemifisha).

Emaphutsa lavamile nekungavisisi umbuto.

- a. Bahlolwa abafundzisi kutsi umbuto ufunani, bavele baphendvule nje.
- b. Emibutweni lefuna imphendvulo leligama linye, bahlolwa babhala indzima.
- c. Lomunye umbuto uphendvulwe ngekunyanyalata, sib. umbuto 11.6.
- d. Umbuto 11.7 nawo awukaphendvulwa kahle, bafundzi baphendvula babuke luhlangotsi lunye bangacatsanisi lokwenteka endzabeni mayelana nelisiko lekungenwa kanye nemtsetfosisekelo.
- e. Embutweni 11.11, bafundzi bekulindzeleke kutsi baphawule ngeliciniso lalokushiwo ngemaphupho, babhekise emndenini waMlungisi neliphupho leyise. Bona bavele baveta kutsi emaphupho aliciniso, bangesekeli ngekucaphuna encwadzini.

Tiphakamiso tekutfufukisa imiphumela yebahlolwa.

- a. Bafundzisi abaceceshe bafundzi ngekufundza bavisise imibuto ngembi kwekuyiphendvula.
- b. Tonkhe tincenye tenoveli kumele tatiwe. (Likhasi le-29 kuSISEYENE)
- c. Kwabiwa kwelinani lemamaki kubalulekile kukhomba bulukhuni nobe bumelula bembuto.
- d. Emagama ebalngisi labasenovelini lefundvwako, kumele angaphanjaniswa.
- e. Akucociswane ngetincwadzi lemisiwe eklasini.
- f. Bafundzi abehlukaniswe ngemacembu babuke nobe ngabe nguyiphi incenye yesakhiwana senoveli, bacoce ngayo babhekise esakhiweni senoveli yonkhe.
- g. Bafundzisi abengentelwe emanotsi ngenoveli lefundvwako babuye bakhutsatwe kutentela abo emanotsi.
- h. Abanikwe umsebenti lomnyenti waseklasini nawasekhaya ngemibuto lehlukene ngencwadzi lemisiwe.
- i. Ayifundwe eklasini lenoveli kute bafundzi bayivisise.
- j. Indlela lekubutwa ngayo etivivinyweni tekuphela kwenyanga nobe ithemu yemnyaka, ayifaniswe nendlela lekubuta ekupheleni kwemnyaka.
- k. Kufanele kutsi bafundzisi bentelwe umhlanganosikolo, lapho batawufundziswa khona ngekuphendvulwa kwemibuto lemifisha ngencwadzi lemisiwe.
- l. Belulekitifundvo kufanele balandzelele umsebenti webafundzisi, kucinisekisa kutsi bafundzisa ngendlela lelindzelekile.

Umdlalo (Imibuto lemifisha).

Emaphutsa lavamile nekungavisisi umbuto.

- a. Bambalwa bahlolwa labehlulekile kuwuphendvula lombuto.
- b. Labanye bahlolwa abafundzisi kutsi umbuto ufunani, bavele baphendvule nje.
- c. Umbuto we-15.3 awukaphendvuleki kahle. Bahlolwa bakhokhe umusho lokhomba similo saMphotfo, bangasasho kutsi wasikhombisa ngayiphi indlela. Loku kwente kutsi balahlekelwe ngemamaki.
- d. Embutweni we-15.5, bahlolwa baphendule babhekisa emdlalweni esikhundleni sekutsi babhekise 'kubomake balomuhla.'
- e. Kungafundzisi umbuto, kwente bahlolwa babhala tifundvo letitfolakala emdlalweni wonkhe kantsi umbuto we-15.7 bewufuna tifundvo letitfolakala etheksthini lecashuniwe.
- f. Umbuto we-15.7 bewufuna bungoti lebebungavelela Ncobile ngekwala Celani, bahlolwa banike bungoti lebebungavelela Celani, endzaweni yaNcobile. Loku kwente kutsi balahlekelwe ngemamaki.
- g. Embutweni we-15.12, bahlolwa bavete tintfo letitfutukisa Mphotfo esikhundleni sekuveta tintfo letenta kutsiwe lutsandvo lwaNcobile belulweluvelo endzaweni yelutsandvo lwangempela.

Tiphakamiso tekutfutukisa imiphumela yebahlolwa.

- a. Bafundzisi abafundzise bafundzi likhono lekufundza bavisise imibuto ngembikwekuyiphendvula.
- b. Tonkhe tincenye temdlalo letivetwe eSitatimendeni Sekharikhulami Yenchubomgomo Nekuholola (SISEYENE) (Likhasi le-28).
- c. Akunakisiswe linani lemamaki labelwe umbuto ngembikwekuwuphendvula.
- d. Emagama ebadlali labasemdlalweni lofundvwako abalulekile, ngaloko awangaphanjaniswa.
- e. Abafundzise ngemasu lasetjentiswa ngumbhali kuveta badlali emdlalweni babuye banikwe nemsebenti lophatselelene nekuvetwa kwebalingisi.
- f. Lokwenteka emdlalweni akucatsaniswe nendlela lekuphilwa ngayo lomuhla.
- g. Imibuto leyahlukahlukene lephatselelene nemdlalo akucociswane ngayo eklasini.
- h. Bafundzi abentelwe emanotsi ngemdlalo lofundvwako babuye bakhutsatwe kutsi nabo batentele abo emanotsi.
- i. Abanikwe umsebenti lomnyenti wasekhaya newaseklasini ngemibuto lephatselelene nemdlalo lofundvwako.
- j. Awudlawe eklasini lomdlalo kute bafundzi bawuvise.
- k. Indlela lekubutwa ngayo etivivinyweni tekuphela kwenyanga/ kwethemu, ayifane nendlela yekubuta lesetjentiswa nakubhalwa luhlolo lwekuphela kwemnyaka.
- l. Bahloli kumele bacinisekise babuye balandzelele kutsi letiphakamiso letingenhla tiyalandzelwa.
- m. Kufanele kutsi bafundzisi bentelwe umhlanganosikolo, lapho batawufundziswa khona ngekuphendvulwa kwemibuto lemifisha ngenzwadzi lemisiwe.
- n. Belulekitifundvo kufanele balandzelele umsebenti webafundzisi, kucinisekisa kutsi bafundzisa ngendlela lelindzelekile.

11.6 SIBUTSETELO SEMPHUMELELO YEBAHLOLWA EPHEPHENI LE-3

Kuphawula jikelele.

- Kungumsebenti webafundzisi kutsi bagcizelele kubaluleka kwaleliphepha njengobe licuketse emamaki lamanyenti kuwengca onkhe lamanye emaphepha kantsi lingaletsa umehluko lomkhulu emiphumeleni yebafundzi.
- Bafundzi balibukela phasi leliphepha, bacabanga kutsi kubhala indzaba nemibhalombiko yintfo lelula lengeke yabehlula.
- Bahlolwa basebente kahle kakhulu kuleliphepha nabacatsaniswa nebemnyaka lowengcile (2017).
- Bakhombise emakhono latfutukile ekubhala.
- Lababhale kahle, imibhalo yabo ivete kutfutuka, lokwente kutsi bahlomule emamaki

11.7 KUHLATIYWA KWENDLELA BAFUNDZI LABASEBENTE NGAYO EPHEPHENI LE-3

SIGABA A: Tindzaba

Emaphutsa lavamile nekungavisisi umbuto.

Umbuto 1

- Munye kuphela umbuto lapho bafundzi babe nebumatima bekuwuphendula. Cishe tonkhe letinye tindzaba tibhalwe kahle futsi bafundzi basebente kahle ngaphandle kwalabo labatsatsela lokusephepheni lemibhuto bakubhale njengobe kunjalo nalabo lababhala lokuphume esihlokweni.
- Umbuto 1.2. Bambalwa kakhulu bahlolwa labaphendvule lombuto. Esampulini yalabalikhulu batsatfu kuphela labawuphendvulile. Munye kubo lotfole emamaki langaphasi kwala-30, bonke batfole emaphesenti la-66.
- Lamanye emaphutsa lentiwa bahlolwa afaka ekhatsi kungasebentisi kahle loku lokundzelako, lokutfolakala eSitatimendeni Sekharikhulamu Yenchubomgomo Nekuhlola, (SIYEYENE) kusukela ekhasini le-104 kuye kule-107:

- * Takhi
- * Ticalo neticalongco temabito
- * Tivumelwano
- * Luhlelomusho
- * Kujutjwa nekuhlanganiswa kwemagama
- * Tinkhatsi
- * Timpawu tekubhala nekufundza
- * Bofeleba
- * Sipelingi/Lupelomagama
- * Kujutjwa kwetindzima
- * Tindzima nekutselelana kwato emanti
- * Kuphindzaphindza imibono

- d. Kusenebahlolwa labehluleka kwakha umusho lokhulumako, lokwenta kutsi indzaba yonkhe ingakhulumi.
- e. Labanye bahlolwa babhala ngetilwimi letingesiso Siswati.
- f. Kusekhona bahlolwa labasabhala tinhlaka tekucala netesibili ngembikwekubhala indzaba, lokubadlela sikhatsi lesinyenti.
- g. Kuyenteka kutsi labanye babo, bakhohlwe kudvweba umugca lovundlile kuletinhlaka, lokwenta kutsi labamakako bamake labahlangana nako ekucaleni, njengobe kushiwo eticondzisweni tekumaka.

Tiphakamiso tekutfufukisa imiphumela yebahlolwa.

- a. Bafundzi abafundziswe timiso talolo nalolo hlobo lwenzaba. (Likhasi 36-37 kuSISEYENE).
- b. Kubalulekile kutsi bafundzi kumele bakhutsatwe kutsi nangabe bayewubhala leliphapha, batilungiselele ngalokuphelele, bakhumbule kutsi emakhono, netakhi netimiso tekusetjentiswa kwelulwimi lokusemaphepheni lamabili lokucaalwe ngawo, kungasetjentiswa ngemphumelelo lenkhulu kuleliphapha. Lokubaluleke kukwengca konkhe, kufundziswa kwetakhiwo taletinhlobo tetindzaba nemibhalombiko lekuleliphapha.
- c. Emarubhriki ekumaka kumele icondzisiswe indlela lasetjentiswa ngayo. Bafundzi kumele bachazelwe indlela lasebenta ngayo, lokungasita kutsi bati lokulindzelekile nakuhlolwa nobe kumakwa endzabeni.
- d. Bafundzi kumele bafundziswe tonkhe tinhlobo tetindzaba.
- e. Akusetjentiswe tibonwa/titfombe eklasini kute bafundzi betayele kucoca ngato, lokutawenta kutsi kube lula kubhala tindzaba ngato.
- f. Emakhonosisekelo elulwimi lafaka ekhatsi lawa lalandzelako kumele afundziswe, (Likhasi 34–36 kuSISEYENE):
 - * Takhi
 - * Ticalo neticalongco temabito
 - * Tivumelwano
 - * Luhlelomusho
 - * Kujutjwa nekuhlanganiswa kwemagama
 - * Tinkhatsi
 - * Timpawu tekubhala nekufundza
 - * Bofeleba
 - * Sipelingi/Lupelomagama
 - * Kujutjwa kwetindzima
 - * Tindzima nekutselelana kwato emanti
- g. Bafundzi kumele bati lulwimi lwebugagu, lolufaka ekhatsi tinongo, taga, tisho, njll, babuye bati inshokutsi yalo nendlela yekulusebentisa endzabeni.

- h. Kubalulekile kutsi kufundziswe ngekwakheka kwetindzima, singeniso, umtimba nesiphetho nemcondvo locuketfwe nguleyo naleyo ndzima (Likhasi le-35 kuSISEYENE).
- i. Kufanele bafundzisi bentelwe umhlanganosikolo, lapho batawufundziswa khona ngendlela lekufale ilandzelwe nakufundziswa ngemibhalo yekuticambela, (Tindzaba).
- j. Belulekitifundvo kufanele balandzelele umsebenti webafundzisi, kucinisekisa kutsi bafundzisa ngendlela lelindzelekile.

SIGABA B: Imibhalombiko

Umbuto 2

Kute bahlolwa lababhale umbuto 2.3: Sihlatiwa nembuto 2.6: I-Athikhili yeliphephandzaba.

Emaphutsa lavamile nekungavisisi umbuto.

a. Umbuto 2.1: Incwadzi yemtsetfo

Bambalwa bahlolwa lababe nemaphutsa. Emaphutsa labawentile, kufaka likheli linye, kungafaki sibingelelo nobe bafake lesingahambelani neluhlobo lwembhalo, sib. 'Malume,' encwadzini yemtsetfo. Labanye abakafaki sihloko. Lokukhulu kunako konkhe kutsi babonge thishelanhloko ngekwakhela sikolo inkundla esikhundleni sekumhalalisela njengobe sikolo sakhe sakhelwe inkundla. Labanye babo basebentise sivaleliso nencwadzi yebungani.

b. Umbuto 2.2: Umlandvomufi

Lincane kakhulu linani lebahlolwa lelibe nebumatima bekuphendvula lombuto. Emaphutsa lentiwe afaka ekhatsi loku lokulandzelako: sibhedlela esikhundleni seligama lendzawo latallelwe kuyo umufi, kuhlanguhlangu kwemaphuzu. Sib. Umufi ucala ngekusishiya emhlabeni bese ucala imfundvo yemabanga laphansi, njll. Kubhala umlandvomufi ube ngendlela yemuntfu wekucala (lokhumako) esikhundleni sekutsi ube ngendlela yemuntfu wesibili (lokukhulunywa ngaye), sib. Mine ..., ngatalwa ngenyanga ye-... Mngani wami..., ngihlabelele ingoma, njll. Kubhalwa umlandvomufi ube nencenye lentjintjwa ibe yinkhulumo, kulesinye sikhatsi ibe simemetelo, sib. Umngcwabo utawuba ngeMgcibelo ehholeni lemmango, njll.

c. Umbuto 2.4: Inkhulumiswano/ Inkhulumomphendvulwano

Labanye bahlolwa abasati sakhiwo senkhulumiswano, esikhundleni semagama alabakhulumako esandleni sesancele, bahlolwa babhala, 'Mine, Mzala, Make, njll. Labanye bahlolwa babhala inkhulumiswano itsatse simo senkhulumoluhlolo, lokukhomba kutsi abawati umehluko emkhatsini wako kokubili. Linyenti labo lifaka bokhulunyiwe, ("...") emavini alabakhulumako lishiye ikholoni emva kweligama lalokhumako. Linyenti aliwufaki umnyakato wetikhulumi nelinani lemagama lelimisiwe alinakwa.

d. Umbuto 2.5: Incwadzi yebungani

Bambalwa bahlolwa lababe nemaphutsa. Emaphutsa labawentile, likheli lelifakwe timphawu tekubhala (.), sibingelelo lesiphambene nesivaleliso, sib. Malume...Ngimi umngani wakho/ malume wakho, njll. Lokukhulu kunako konkhe kutsi babonge kuvakashelwa esikhundleni sekubonga kuvakashiswa. Labanye babo basebentise sivaleliso sencwadzi yemtsetfo babuye bafaka sibonga, basayina.

Tiphakamiso tekutfufukisa imiphumela yebahlolwa.

- a. Bafundzisi kumele bafundzise timiso talolo nalolo hlobo lwembhalombiko, sib. Incwadzi yemtsetfo, umlandvomufi, inkhulumiswano, njll. (Likhasi 38-43 kuSISEYENE).
- b. Abahlole ngekusebentisa emarubhriki ekuhlola imibhalombiko etikolweni kute betayele kuwasebentisa.
- c. Abakhutsate bafundzi kutsi bafundzise umbuto ngembikwekuwuphendvula, babuye bakhutse sihloko labatawuba nemaphuzu lamanyenti ngaso.
- d. Bafundzisi kumele bakhutsate bafundzi kutsi nangabe babhala umlandvomufi basebentise indlela yemuntfu wesit-satfu, lokukhulunywa ngaye.
- e. Kumele kufundzise umehluko emkhatsini wenkhulumoluhlole nenkhulumiswano.
- f. Bafundzisi kumele bafundzise emakhonosisekelo elulwimi lafaka ekhatsi lawa lalandzelako, (Likhasi 34-36 kuSISEYENE):
 - * Takhi
 - * Ticalo neticalongco temabito
 - * Tivumelwano
 - * Luhlelomusho
 - * Kujutjwa nekuhlanganiswa kwemagama
 - * Tinkhatsi
 - * Timpawu tekubhala nekufundza
 - * Bofeleba
 - * Sipelingi/Lupelomagama
 - * Kujutjwa kwetindzima
 - * Tindzima nekutselelana kwato emanti
- g. Kumele kufundzise kwakheka kwetindzima, singeniso, umtimba nesiphetho nemcondvo locuketfwe nguleyo naleyo ndzima. (Likhasi 1e-35 kuSISEYENE)
- h. Kufanele bafundzisi bentelwe umhlanganosikolo, lapho batawufundziswa ngendlela lefanele, lekumele ilandzelwe nakufundwa imibhalombiko.
- i. Belulekitifundvo kufanele balandzelele umsebenti webafundzisi, kucinisekisa kutsi bafundzisa ngendlela lelindzelekile.